

2793 Fenton Rd. Tel: (613) 822-1765
Gloucester, Ontario Fax: (613) 822-1556
K1T 3T9 Home Page: WWW.HOVEY.CA

Nov 4/97

FIELD AMENDMENT NOTICE

SNOW DETECTOR WIRING CORRECTION

Distribution:

- | | | |
|------------------------|---|--|
| Union Pacific Railroad | - | 2 Basic EMS's shipped to Mason city, Iowa |
| | - | 2 Intermediate EMS's shipped to Sedalia |
| CP Rail | - | 5 Intermediate EMS's shipped to Kamloops, B.C. |
| | - | 11 Intermediate EMS's shipped to Hope, B.C. |
| CN Rail | - | 8 Intermediate EMS's shipped to Winnipeg, Manitoba |

We have identified a snow detector cone and grid heater wiring error. Detectors with this error will not melt and detect snow.

The details of this problem and the corrective action required, are described on the following field modifications.

This modification has been made to production heaters manufactured as of Nov 4/97.

Thank you,

Gregor Harris, P.Eng.,
Manager of Engineering
HOVEY INDUSTRIES LTD.



2793 Fenton Rd. Tel: (613) 822-1765
Gloucester, Ontario Fax: (613) 822-1556
K1T 3T9 Home Page: WWW.HOVEY.CA

Nov 4/97

FIELD AMENDMENT NOTICE

SNOW DETECTOR WIRING CORRECTION

Distribution:

- Union Pacific Railroad - 2 Basic EMS's shipped to Mason city, Iowa
- 2 Intermediate EMS's shipped to Sedalia

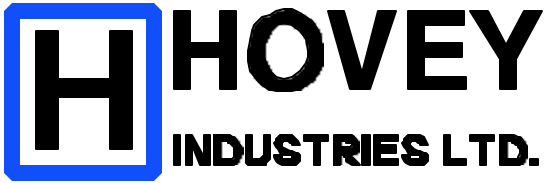
We have identified a snow detector cone and grid heater wiring error. Detectors with this error will not melt and detect snow.

The details of this problem and the corrective action required, are described on the following field modifications.

This modification has been made to production heaters manufactured as of Nov 4/97.

Thank you,

Gregor Harris, P.Eng.,
Manager of Engineering
HOVEY INDUSTRIES LTD.



2793 Fenton Rd. Tel: (613) 822-1765
Gloucester, Ontario Fax: (613) 822-1556
K1T 3T9 Home Page: WWW.HOVEY.CA

Nov 4/97

FIELD AMENDMENT NOTICE

SNOW DETECTOR WIRING CORRECTION

Distribution:

- CP Rail - 5 Intermediate EMS's shipped to Kamloops, B.C.
- 11 Intermediate EMS's shipped to Hope, B.C.

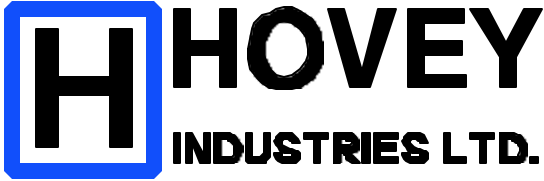
We have identified a snow detector cone and grid heater wiring error. Detectors with this error will not melt and detect snow.

The details of this problem and the corrective action required, are described on the following field modifications.

This modification has been made to production heaters manufactured as of Nov 4/97.

Thank you,

Gregor Harris, P.Eng.,
Manager of Engineering
HOVEY INDUSTRIES LTD.



2793 Fenton Rd. Tel: (613) 822-1765
Gloucester, Ontario Fax: (613) 822-1556
K1T 3T9 Home Page: WWW.HOVEY.CA

Nov 4/97

FIELD AMENDMENT NOTICE

SNOW DETECTOR WIRING CORRECTION

Distribution:

CN Rail - 8 Intermediate EMS's shipped to Winnipeg, Manitoba

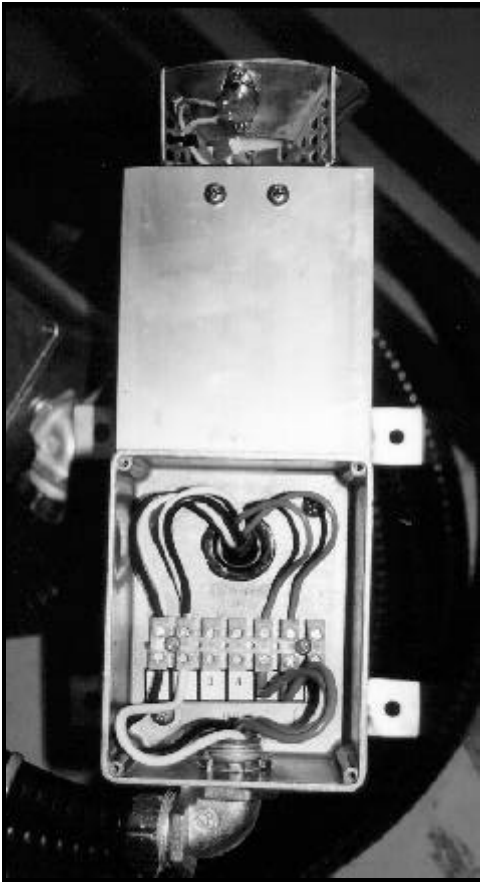
We have identified a snow detector cone and grid heater wiring error. Detectors with this error will not melt and detect snow.

The details of this problem and the corrective action required, are described on the following field modifications.

This modification has been made to production heaters manufactured as of Nov 4/97.

Thank you,

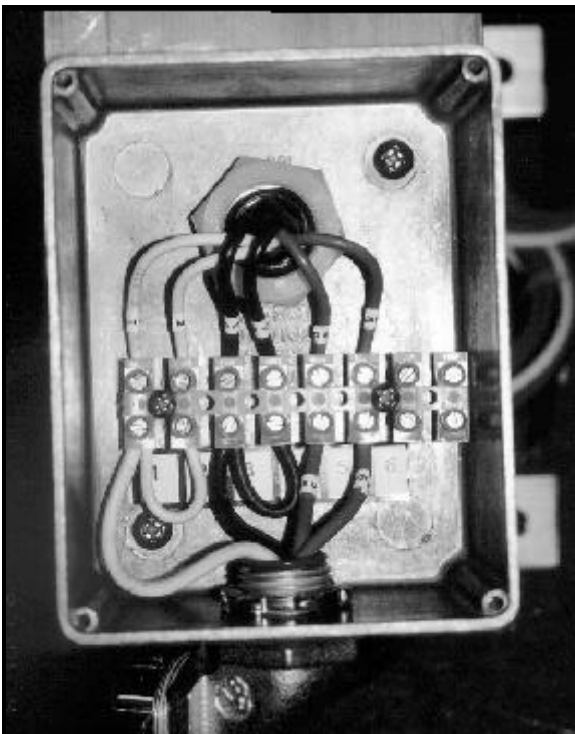
Gregor Harris, P.Eng.,
Manager of Engineering
HOVEY INDUSTRIES LTD.



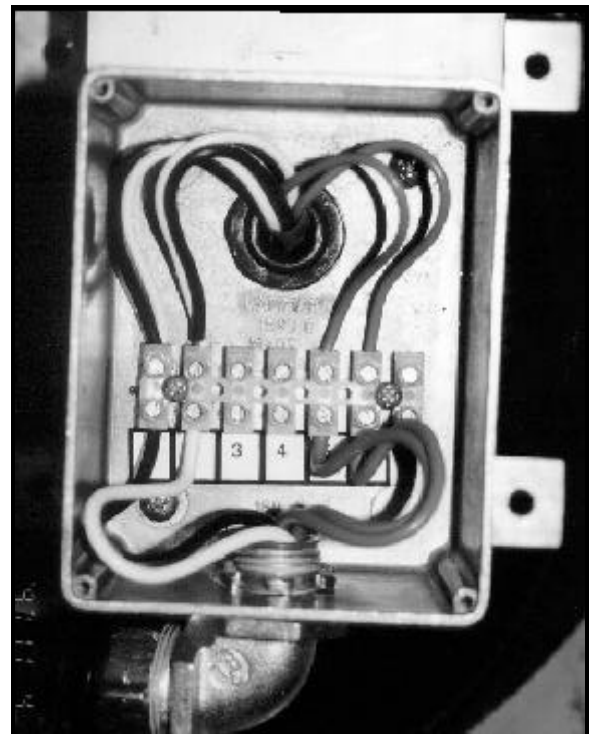
Correct the wiring by

- 1) Pairing a white from the cone heater with a black wire from the grid heater (wires 1 and 3) and place them into terminal 1. Take the remaining black and white wire pair (wire 2 and 4) and place them into terminal 2.
- 2) Remove the white jumper wire between terminal 1 and 2.
- 3) Remove the black jumper wire between terminal 3 and 4.
- 4) Connect the black and white leads from the conduit whip to terminals 1 and 2 respectively.

Remove junction box cover to access terminal strip. (Wiring shown is correct).



Incorrect wiring



Correct wiring