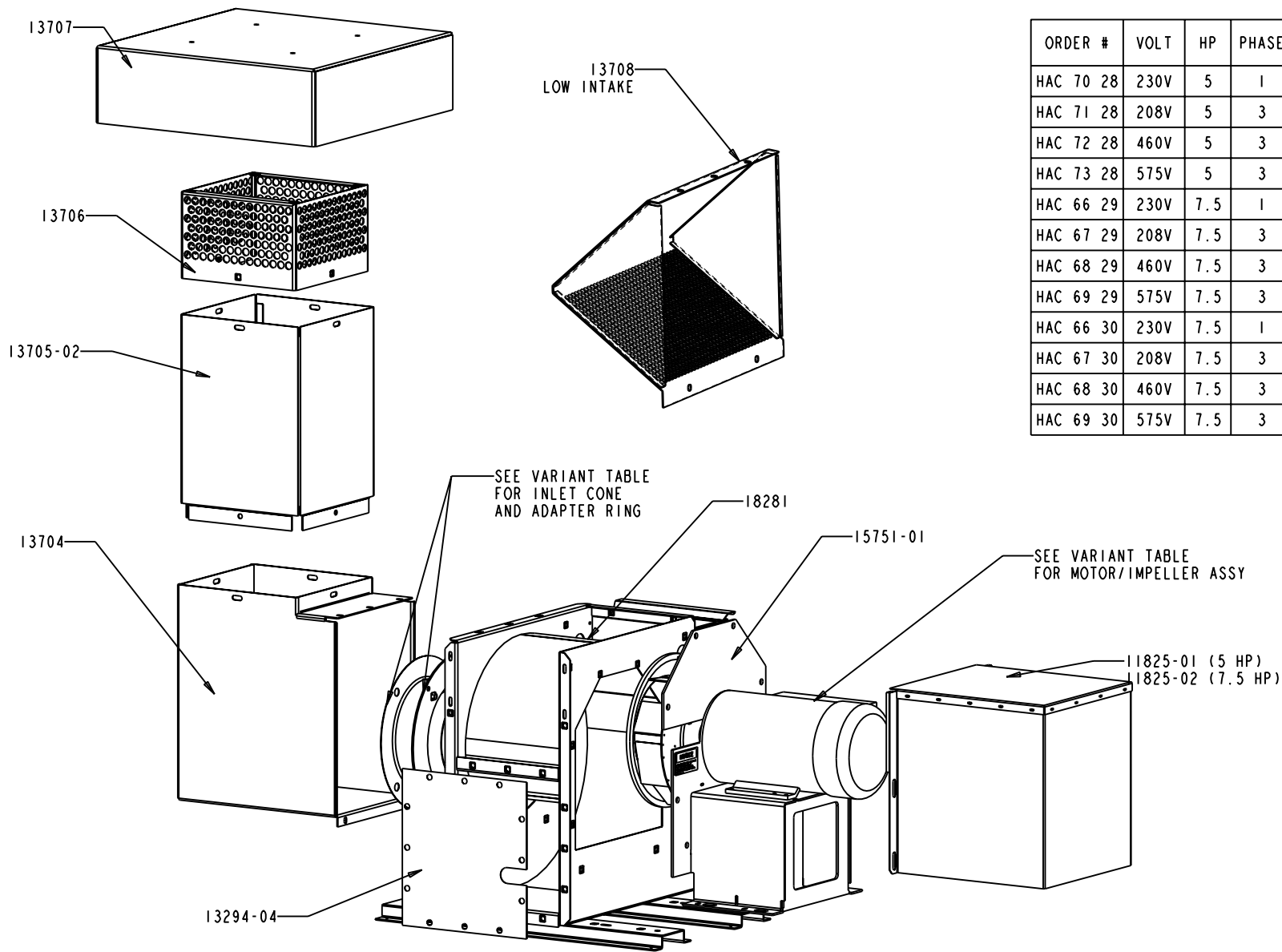
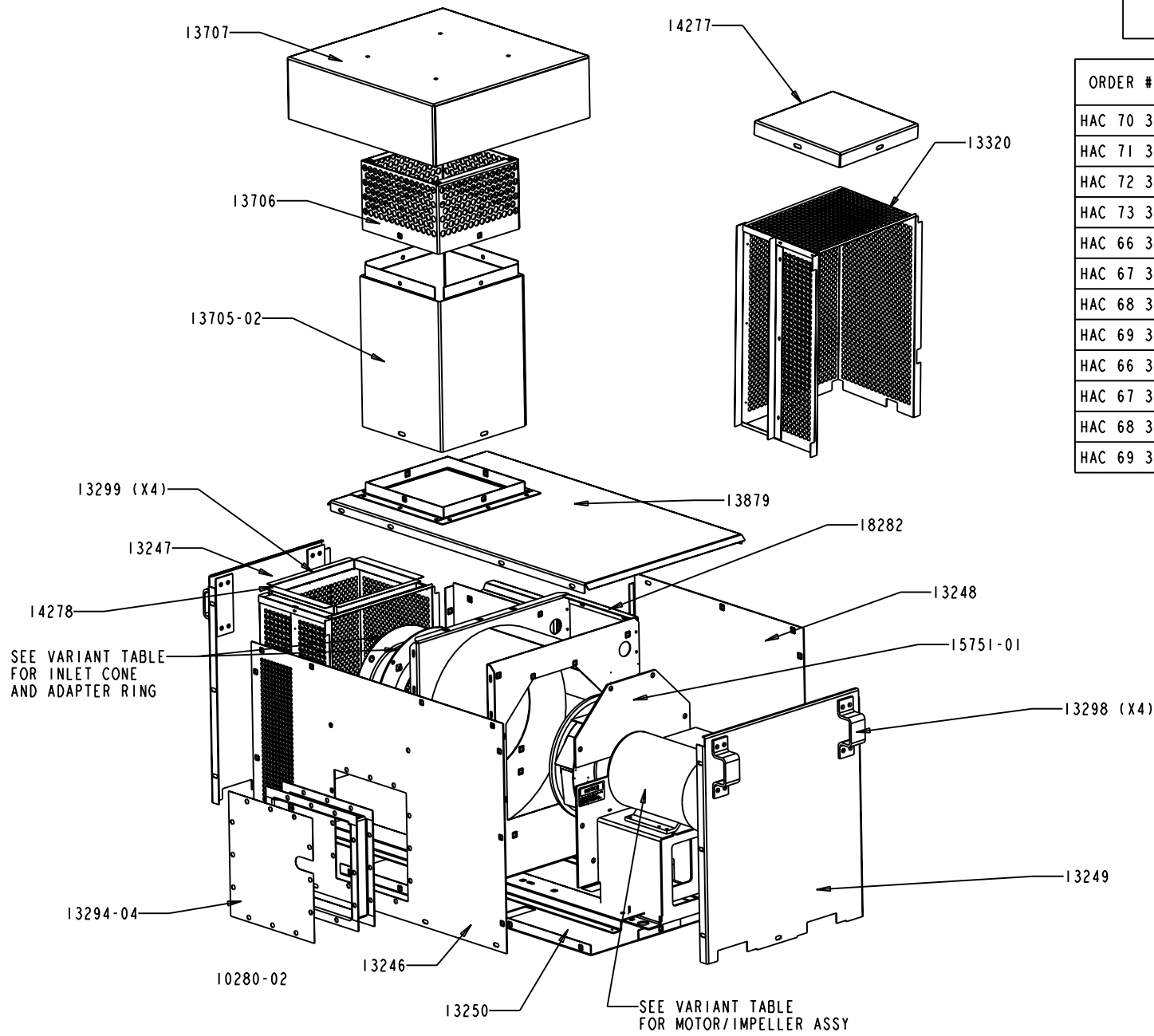


ORDER #	VOLT	HP	PHASE	MOTOR ASSY.	ELEC. PANEL	INLET CONE
HAC 70 28	230V	5	1	18315	14800	10261 + 13231-01 (ADPTR RING)
HAC 71 28	208V	5	3	18316	14801	
HAC 72 28	460V	5	3	18316	14802	
HAC 73 28	575V	5	3	18318	14803	
HAC 66 29	230V	7.5	1	18320	14804	
HAC 67 29	208V	7.5	3	18321	14805	
HAC 68 29	460V	7.5	3	18321	14806	15758-02
HAC 69 29	575V	7.5	3	18323	14807	
HAC 66 30	230V	7.5	1	18311	14804	
HAC 67 30	208V	7.5	3	18312	14805	
HAC 68 30	460V	7.5	3	18312	14806	
HAC 69 30	575V	7.5	3	18314	14807	



SCALE 0.060

ORDER #	VOLT	HP	PHASE	MOTOR ASSY.	ELEC. PANEL	INLET CONE
HAC 70 35	230V	5	1	18315	14800	10261 + 13231-01 (ADPTR RING)
HAC 71 35	208V	5	3	18316	14801	
HAC 72 35	460V	5	3	18316	14802	
HAC 73 35	575V	5	3	18318	14803	
HAC 66 36	230V	7.5	1	18320	14804	
HAC 67 36	208V	7.5	3	18321	14805	
HAC 68 36	460V	7.5	3	18321	14806	
HAC 69 36	575V	7.5	3	18323	14807	15758-02
HAC 66 37	230V	7.5	1	18311	14804	
HAC 67 37	208V	7.5	3	18312	14805	
HAC 68 37	460V	7.5	3	18312	14806	
HAC 69 37	575V	7.5	3	18314	14807	



SEE VARIANT TABLE
FOR INLET CONE
AND ADAPTER RING

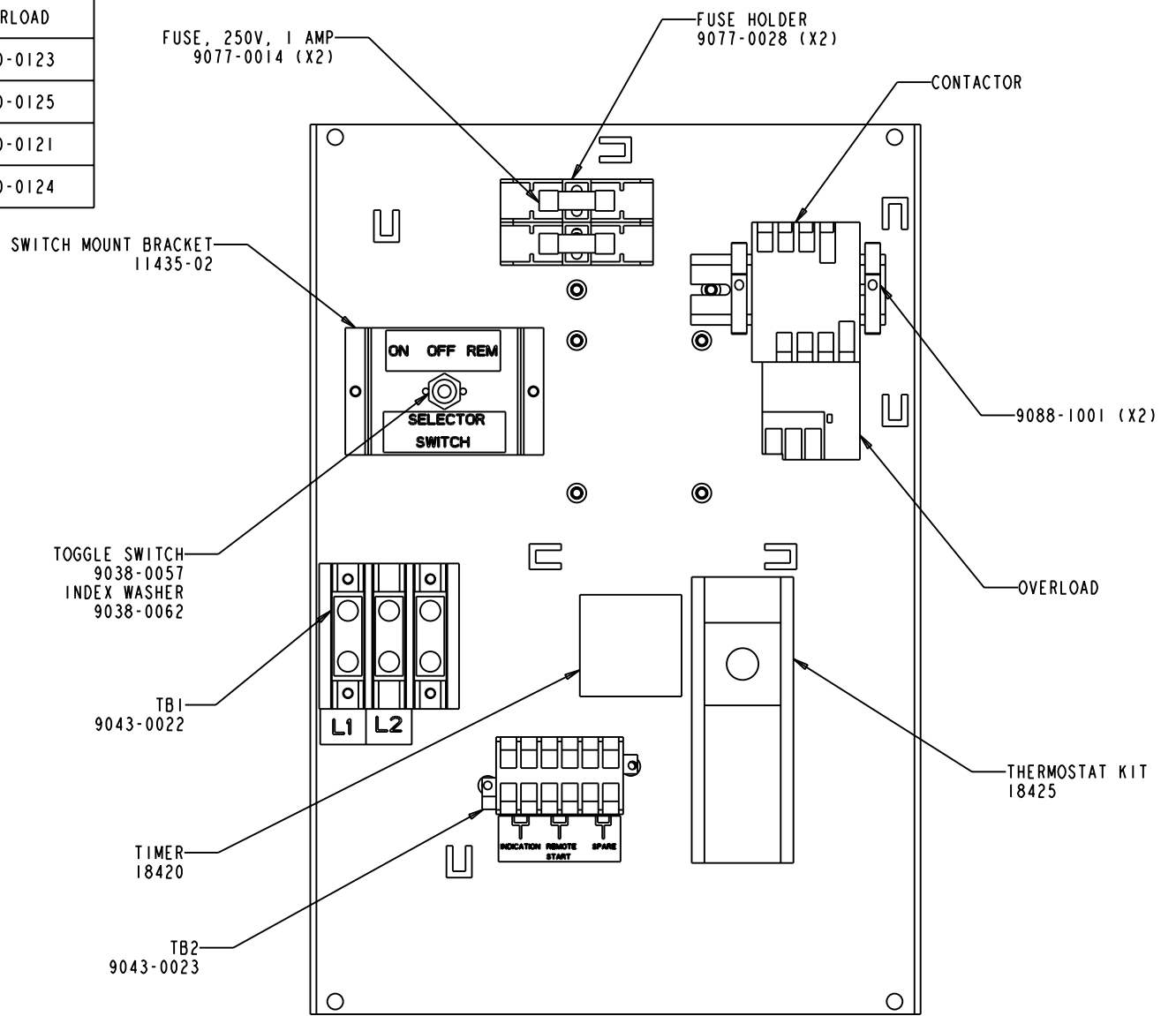
SEE VARIANT TABLE
FOR MOTOR/IMPELLER ASSY

SCALE 0.050

TITLE ELEC PANEL ASSY.
7.5 & 5 HP, 230V & 208V
SPARE PARTS

DRAWING NUMBER REV. A
18609 SHT. 1/1

VARIANT TABLE				
HP	VOLTS	PHASE	CONTACTOR	OVERLOAD
7.5	208	3	9078-0123	9040-0123
	240	1	9078-0125	9040-0125
5	208	3	9078-0122	9040-0121
	240	1	9078-0124	9040-0124



SCALE 0.300

MATERIAL
SEE INDIVIDUAL PART DRAWINGS

SCALE
AS SHOWN

UNLESS OTHERWISE SPECIFIED
DIMENSIONS ARE IN INCHES

XX ± 0.03
XXX ± 0.01

ANGLES ± 0.5°
OTHER -----

HOVEY INDUSTRIES LIMITED

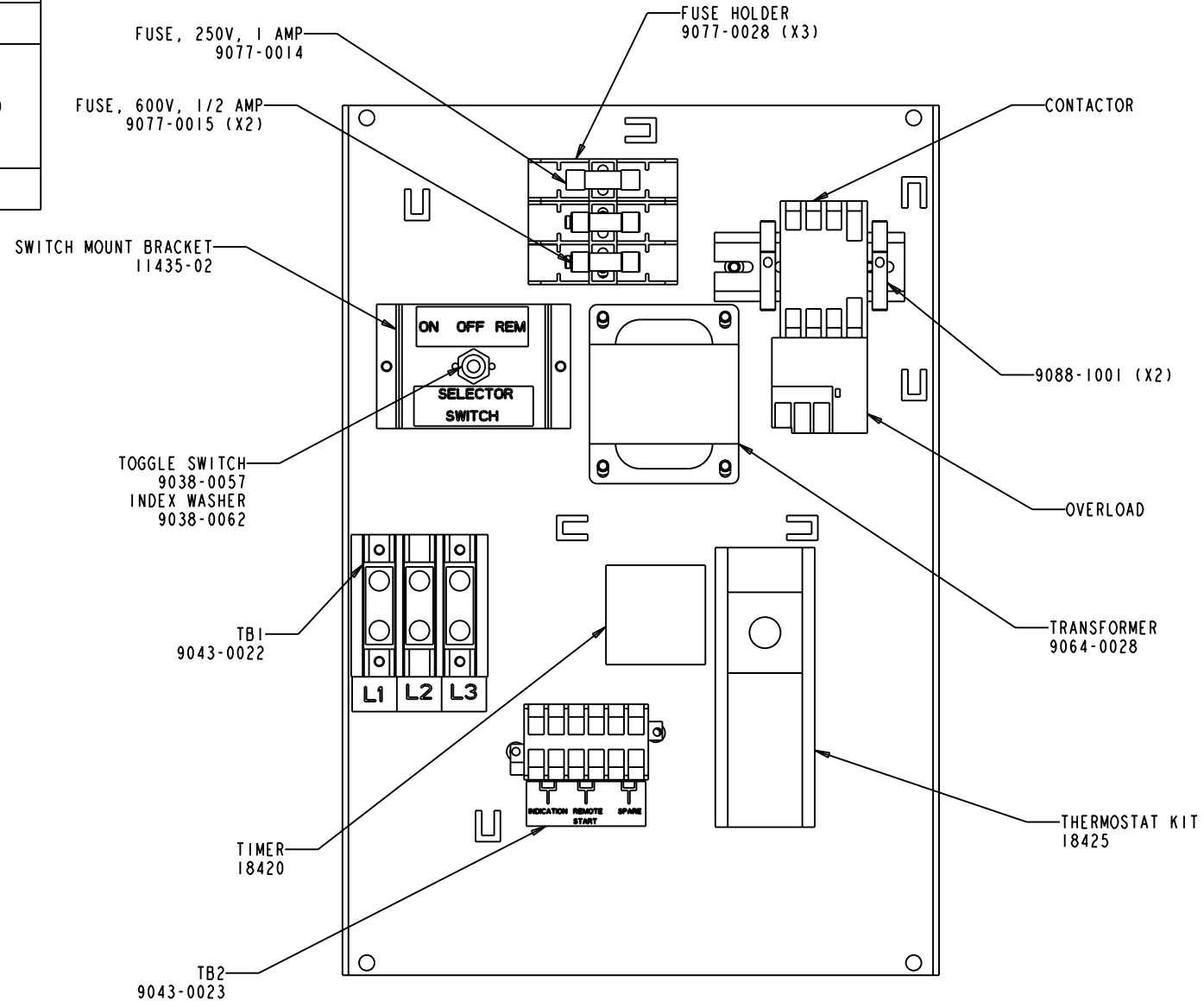
DWN AVG DATE DWN 2 MAY 05 CHKD DATE

DWG SIZE	A	PRODUCTION RELEASE, ECN 1969	
AI	LTR	DESCRIPTION	DATE CHKD

TITLE ELEC PANEL ASSY.
7.5 & 5 HP, 460V & 575V
SPARE PARTS

DRAWING NUMBER REV. A
18610 SHT. 1/1

VARIANT TABLE			
HP	VOLTS	CONTACTOR	OVERLOAD
7.5	460	9078-0121	9040-0120
	575	9078-0120	
5	460	9078-0120	9040-027
	575		



SCALE 0.300

MATERIAL
SEE INDIVIDUAL PART DRAWINGS

SCALE
AS SHOWN

UNLESS OTHERWISE SPECIFIED
DIMENSIONS ARE IN INCHES

XX ± 0.03
XXX ± 0.01

ANGLES ± 0.5°
OTHER

HOVEY INDUSTRIES LIMITED

DWN AVG DATE DWN 2 MAY 05 CHKD DATE

DWG SIZE
A1

A
LTR

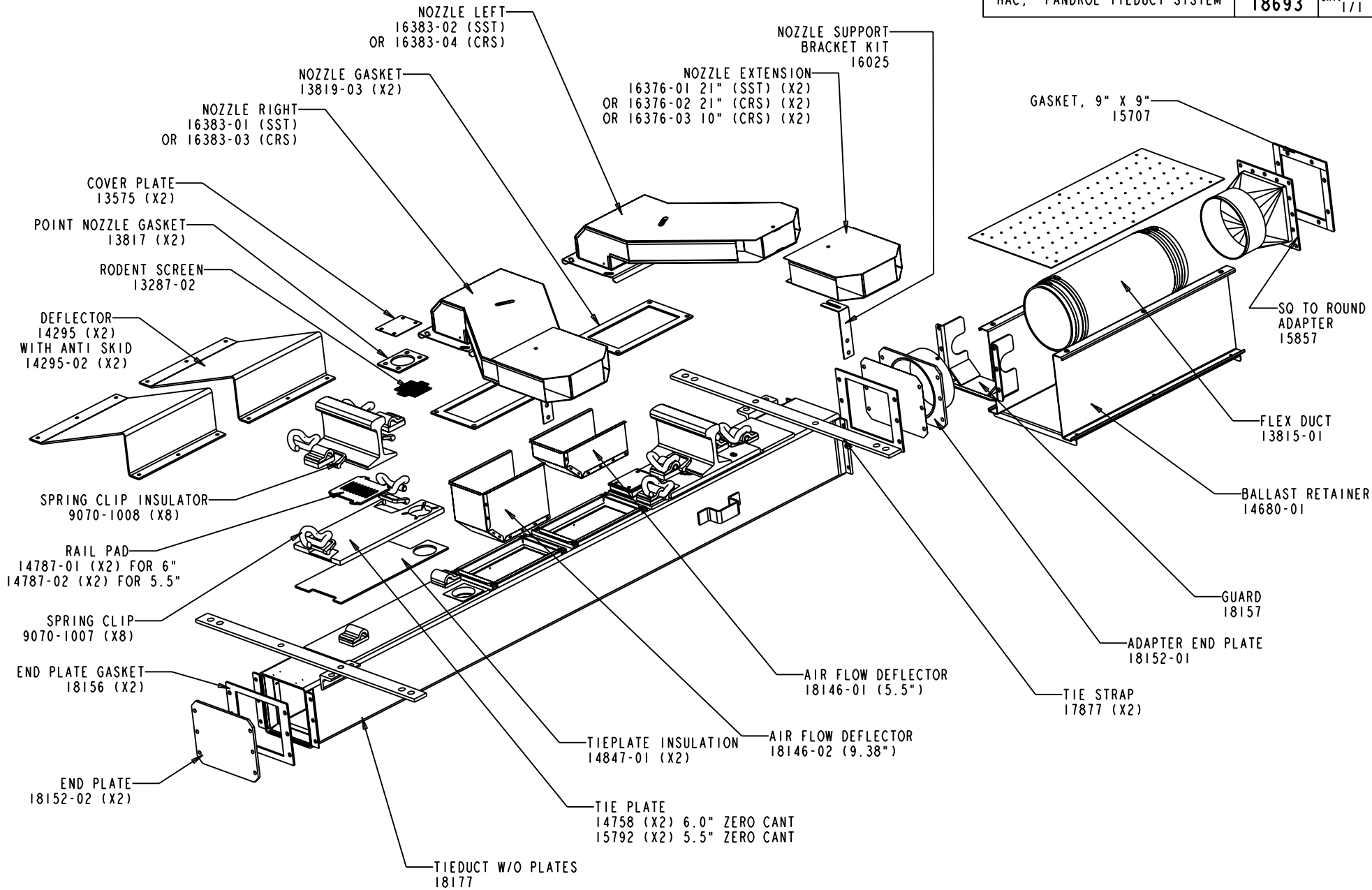
PRODUCTION RELEASE, ECN 1969

DESCRIPTION

DATE

CHKD

TITLE HAC, PANDROL TIEDUCT SYSTEM	DRAWING NUMBER	REV.
	18693	A
	SHT.	1/1



SCALE 0.050

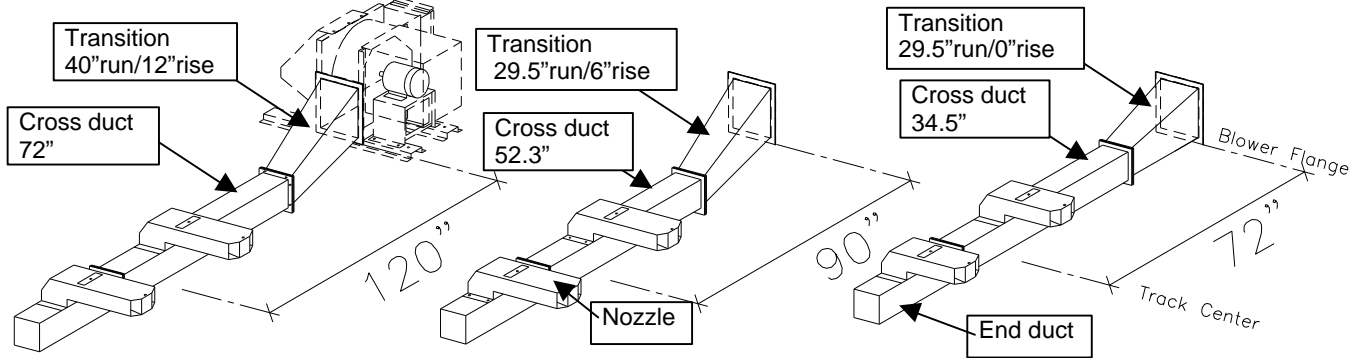
MATERIAL SEE INDIVIDUAL PART DRAWING	SCALE AS SHOWN	UNLESS OTHERWISE SPECIFIED DIMENSIONS ARE IN INCHES	XX ± 0.03	ANGLES ± 0.5°	HOVEY INDUSTRIES (2005) INC.	DWG SIZE	A	PRODUCTION RELEASE, ECN 1971		
			XXX ± 0.01	OTHER -----		AI				
					DWN AVG					
					DATE 19 MAY 05					
					CHKD					
					DATE					

HAC Cross Duct System

Ductwork installs in crib between ties.

There are three standard configurations based on track clearances of 120", 90" and 72". However components can be interchanged to suit any particular application. Components are available in hot dipped galvanized or stainless steel construction.

Note: Transition ducts are applicable to both cross duct and tieduct systems.



Description	Part Numbers	
	Hot Dipped Galvanized, 11GA, Construction	Stainless Steel, 11GA, Construction
Nozzles		
25" long	13490	14453
40"	13491	14464
Cross Ducts		
34.5" long (72"CLR)	13221-02	14460-02
52.3" (90" CLR)	13321-03	14460-03
72.0" (120"CLR)	13321-01	14460-01
End Duct, 36"	13220	14456
Transition Ducts		
29.5"run /0" rise (72"CLR)	13222	14544
29.5"run /6" rise (90" CLR)	13226	14545
40"run /12" rise (120" CLR)	13225	14461
Extension ducts, 9"x9"		
1'	13223-01	14458-01
2'	13223-02	14458-02
3'	13223-03	14458-03
4'	13223-04	14458-04
5'	13223-05	14458-05
6'	13223-06	14458-06
7'	13223-07	14458-07
8'	13223-08	14458-08
9'	13223-09	14458-09
10'	13223-10	14458-10
Gasket kits c/w hardware		
Nozzle	14462	
9"X9" Flange	15707	
16"X17" Flange	13206	