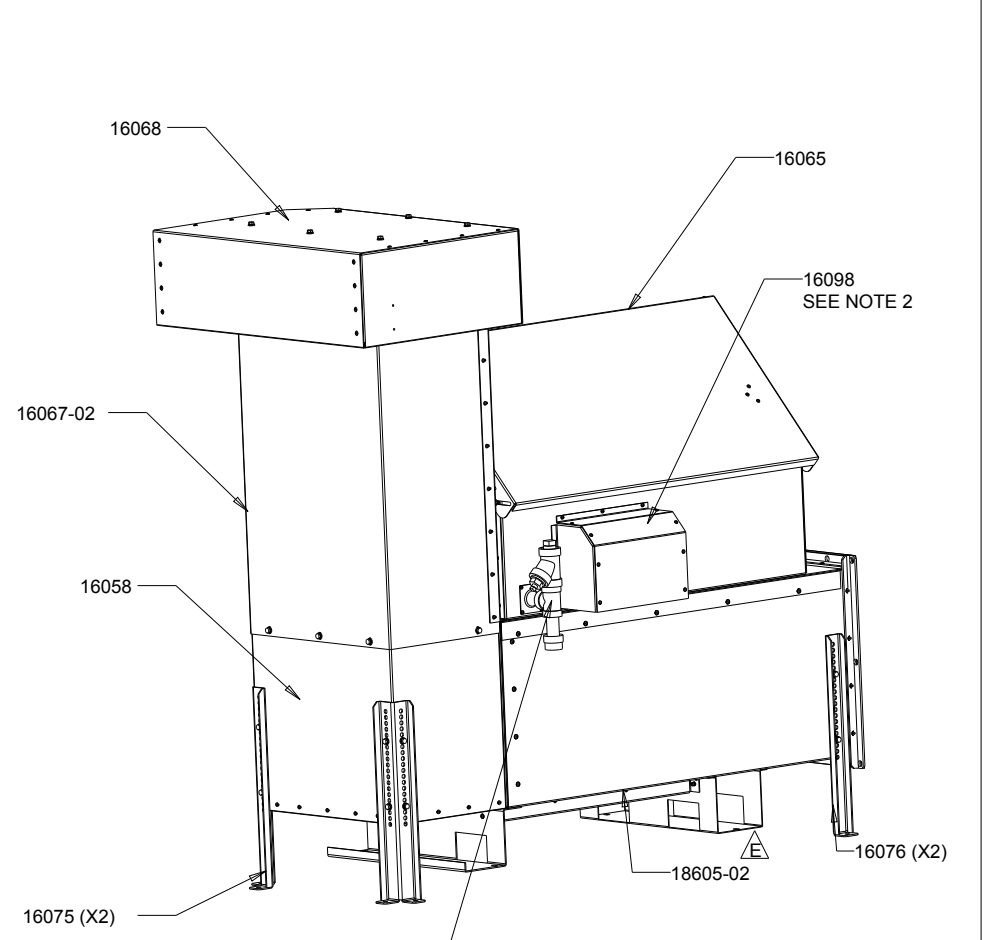
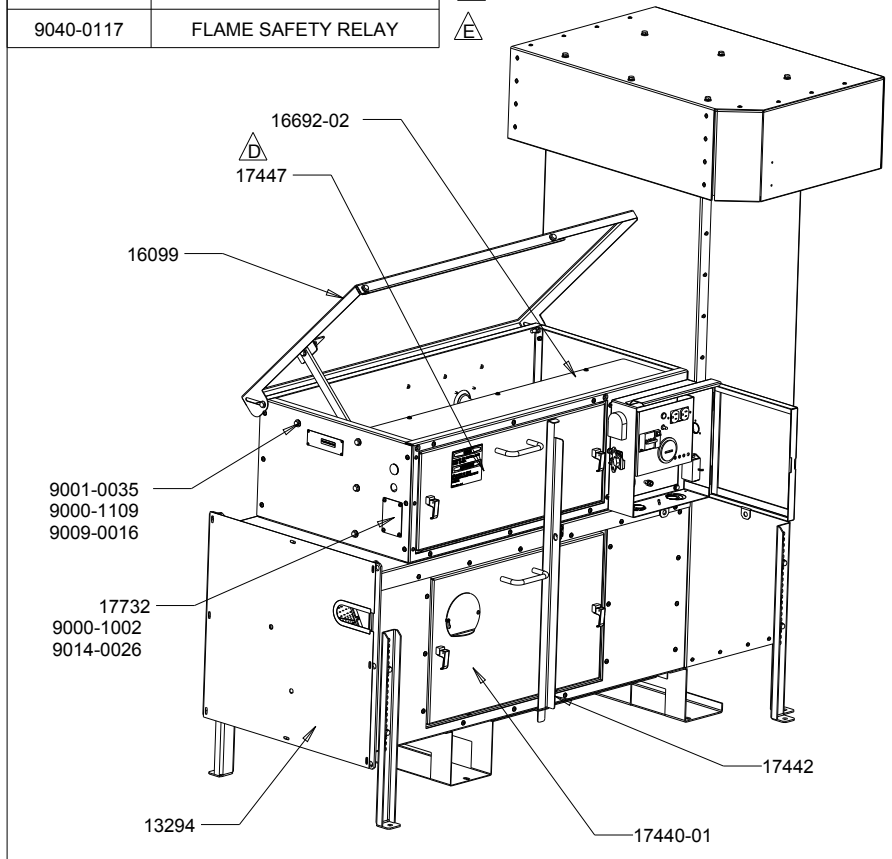


PACKAGED LOOSE	
PART	DESCRIPTION
12241	KIT HDW INSTALLATION
10804	KIT CONVERT TO NG
13341-03	KIT INSL THERMOS
13393	KIT GSKT
18596	DOC PKG
9040-0117	FLAME SAFETY RELAY

TITLE	HF 900, 240V CN W/BOLT-ON LEGS	DRAWING NUMBER	REV.
		18001	H SHT. 2/4



- NOTE:
- SEE DWG 18449 FOR FASTENERS AND DWG 18450 FOR LABEL PLACEMENT
 - 16440-01 (X2), 9033-0041 (X2), 11712 (X2), 9045-0176 & 9045-0221 LOCATED BEHIND THIS PANEL
 - TEST ACCORDING TO TEST SHEET 18604
 - LOAD PROGRAM 18504 INTO LOGO PLC ONCE WIRING IS COMPLETED THEN ADD LABEL 18579

18001-02 HIGH INTAKE
W/O EMS

SCALE 0.050

MATERIAL	SCALE
SEE INDIVIDUAL PARTS DRAWING	AS SHOWN

UNLESS OTHERWISE SPECIFIED DIMENSIONS ARE IN INCHES	XX ± 0.03 XXX ± 0.01	ANGLES ± 0.5 ° OTHER _____
--	-------------------------	-------------------------------

HOVEY INDUSTRIES 2005 INC			
DWN	DATE DWN	CHKD	DATE
MEP	18 JAN 01		

DWG SIZE	A1
LTR	DESCRIPTION
	DATE
	CHKD

H	SEE SHT. 3.4 FOR CHANGES. ECN 2538	15FEB2011	GTM
G	10804 WAS 12826, ECN 2126	7 JUL 06	AVG
F	9045-0221 WA 0120 9045-0211 REMOVED, ECN 1917	14 NOV 05	AVG
E	PROGRAM 18504 WAS 17688, LABEL 18579 WAS 17733, 18605-02 WAS 16444-02, 18604 WAS 16364, 18596 WAS 16360, 9040-00117 ADDED 9045-0221 WAS 9045-0109, ECN 1944D	23 MAR 05	AVG
D	HDW REFERENCE MOVED TO DWG 18449 LABELS REFERENCES MOVED TO DWG 18450	27 AUG 04	AVG