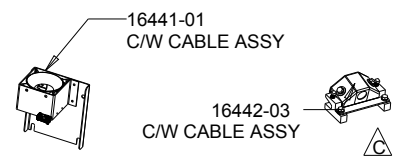


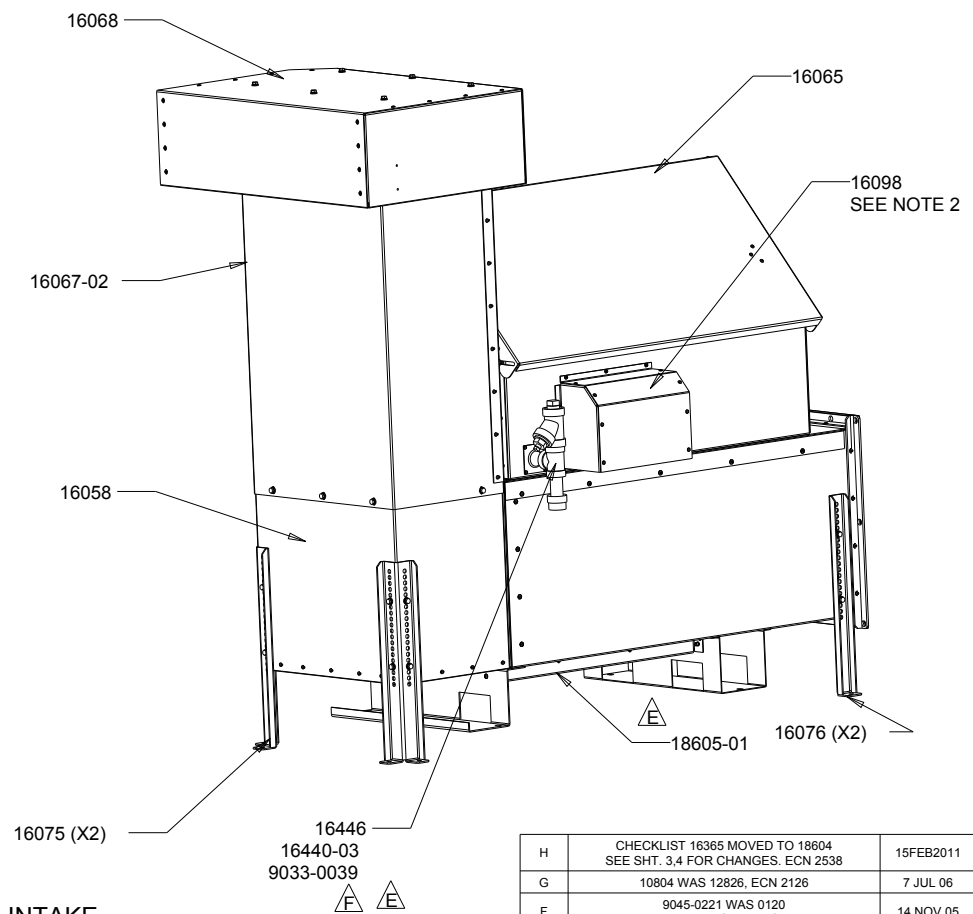
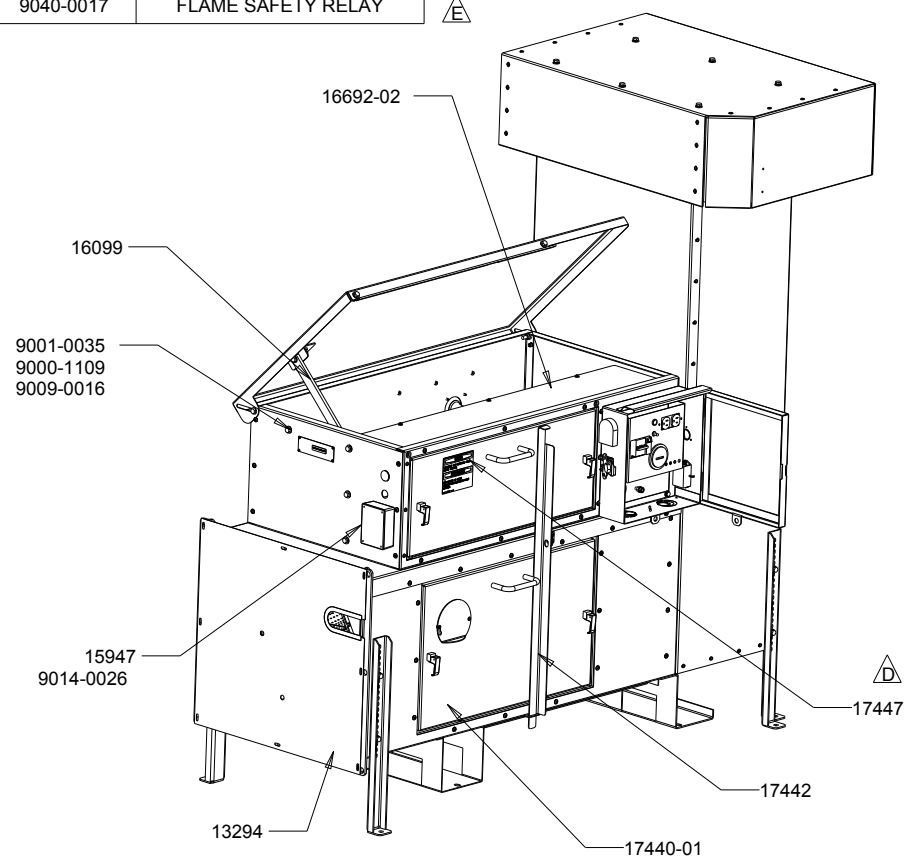
PACKAGED LOOSE	
PART	DESCRIPTION
12241	KIT HDW INSTALLATION
10804	KIT CONVERT TO NG
13341-03	KIT INSL THERMOS
13393	KIT GSKT
18596	DOC PKG
9040-0017	FLAME SAFETY RELAY

TITLE	HF 900, 240V CN W/BOLT-ON LEGS	DRAWING NUMBER	REV.
		18001	H
			SHT. 1/4



⚠ G  
⚠ E  
⚠ E

⚠ E ⚠ H



NOTE:  
 1. SEE DWG 18449 FOR FASTENERS AND DWG 18450 FOR LABEL PLACEMENT  
 2. 16440-01 (X2), 9033-0041 (X2), 11712 (X2), 9045-0176 & 9045-0221 LOCATED BEHIND THIS PANEL  
 3. TEST ACCORDING TO TEST SHEET 18604  
 4. LOAD PROGRAM 18504 INTO LOGO PLC ONCE WIRING IS COMPLETED THEN ADD LABEL 18579

⚠ D  
⚠ E  
⚠ F  
⚠ G

**18001-01 HIGH INTAKE W/EMS**

SCALE 0.050

MATERIAL	SCALE
SEE INDIVIDUAL PARTS DRAWING	AS SHOWN

UNLESS OTHERWISE SPECIFIED DIMENSIONS ARE IN INCHES	XX ± 0.03 XXX ± 0.01	ANGLES ± 0.5 ° OTHER _____
---	-------------------------	-------------------------------

HOVEY INDUSTRIES 2005 INC			
DWN	DATE DWN	CHKD	DATE
MEP	18 JAN 01		

DWG SIZE	A1
LTR	DESCRIPTION
	DATE
	CHKD

H	CHECKLIST 16365 MOVED TO 18604 SEE SHT. 3.4 FOR CHANGES. ECN 2538	15FEB2011	GTM
G	10804 WAS 12826. ECN 2126	7 JUL 06	AVG
F	9045-0221 WAS 0120 9045-0211 REMOVED. ECN 1917	14 NOV 05	AVG
E	PROGRAM 18504 WAS 17688. LABEL 18579 WAS 17733. 18605-01 WAS 16444-01. 18604 WAS 16364. 18596 WAS 16360. 9045-0211 WAS 9045-0109. 16365 AND 9040-0017 ADDED ECN 1944D	23 MAR 05	AVG
D	HDW REFERENCE MOVED TO DWG 18449 LABELS REFERENCES MOVED TO DWG 18450	27 AUG 04	AVG