

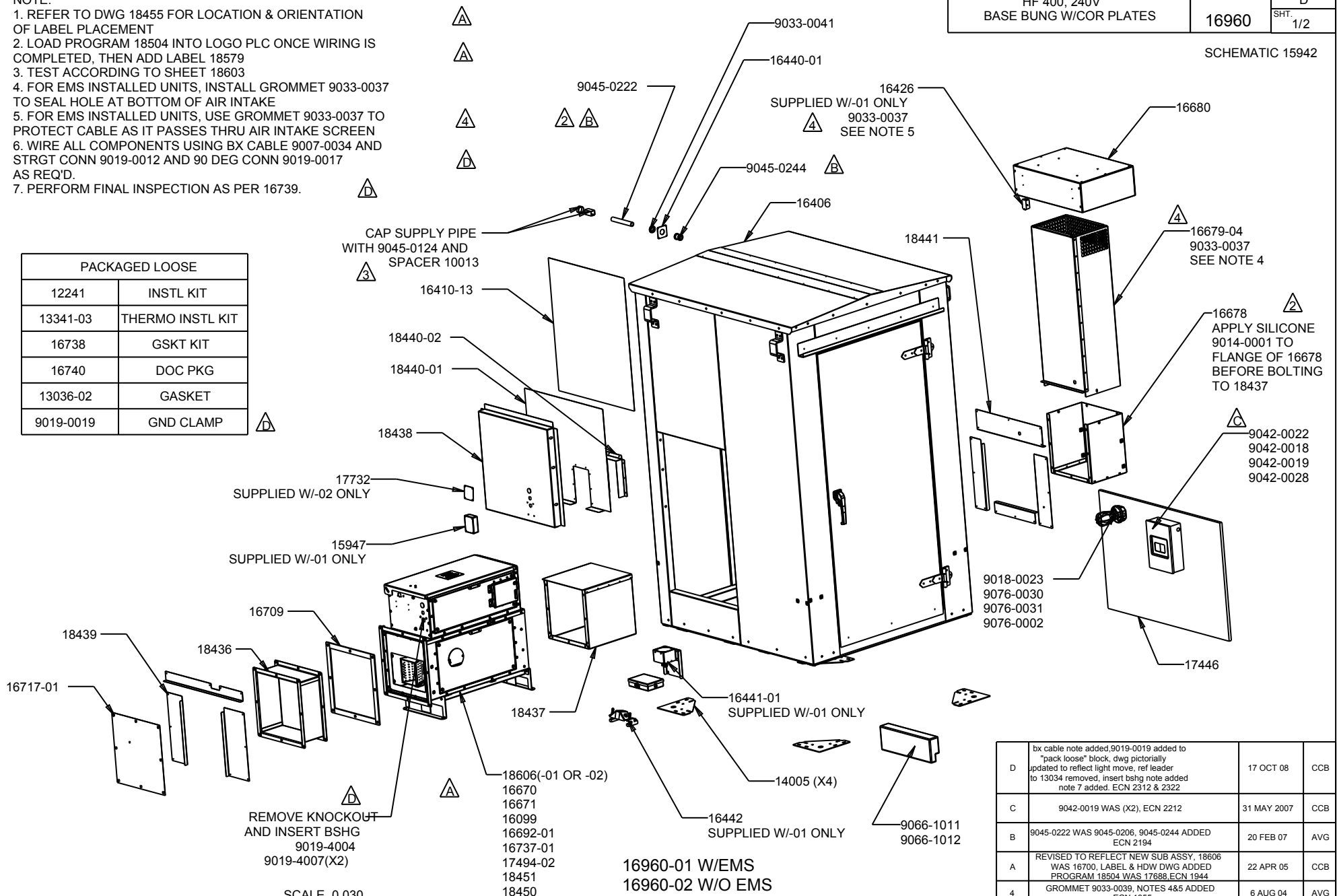
NOTE:

1. REFER TO DWG 18455 FOR LOCATION & ORIENTATION OF LABEL PLACEMENT
2. LOAD PROGRAM 18504 INTO LOGO PLC ONCE WIRING IS COMPLETED, THEN ADD LABEL 18579
3. TEST ACCORDING TO SHEET 18603
4. FOR EMS INSTALLED UNITS, INSTALL GROMMET 9033-0037 TO SEAL HOLE AT BOTTOM OF AIR INTAKE
5. FOR EMS INSTALLED UNITS, USE GROMMET 9033-0037 TO PROTECT CABLE AS IT PASSES THRU AIR INTAKE SCREEN
6. WIRE ALL COMPONENTS USING BX CABLE 9007-0034 AND STRGT CONN 9019-0012 AND 90 DEG CONN 9019-0017 AS REQ'D.
7. PERFORM FINAL INSPECTION AS PER 16739.

TITLE HF 400, 240V BASE BUNG W/COR PLATES	DRAWING NUMBER	REV.
	16960	D SHT. 1/2

SCHEMATIC 15942

PACKAGED LOOSE	
12241	INSTL KIT
13341-03	THERMO INSTL KIT
16738	GSKT KIT
16740	DOC PKG
13036-02	GASKET
9019-0019	GND CLAMP



SCALE 0.030

MATERIAL	SCALE
SEE INDIVIDUAL PARTS DRAWING	AS SHOWN

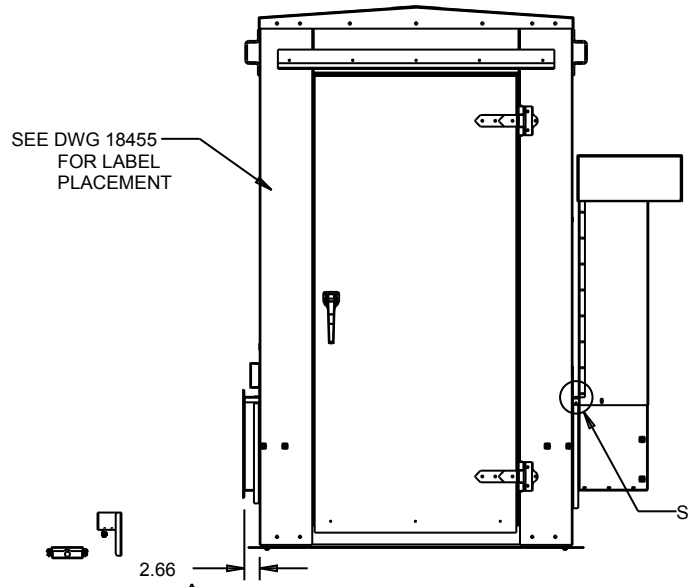
UNLESS OTHERWISE SPECIFIED DIMENSIONS ARE IN INCHES	XX ± 0.03 XXX ± 0.01	ANGLES ± 0.5 ° OTHER _____
--	-------------------------	-------------------------------

HOVEY INDUSTRIES 2005 INC			
DWN	DATE DWN	CHKD	DATE
AVG	20 AUG 03		

DWG SIZE	A1
LTR	DESCRIPTION
	DATE
	CHKD

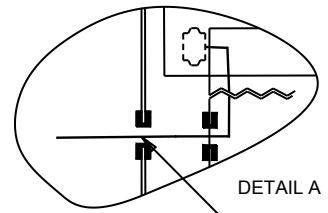
D	bx cable note added, 9019-0019 added to "pack loose" block, dwg pictorially updated to reflect light move, ref leader to 13034 removed, insert bshg note added note 7 added. ECN 2312 & 2322	17 OCT 08	CCB
C	9042-0019 WAS (X2), ECN 2212	31 MAY 2007	CCB
B	9045-0222 WAS 9045-0206, 9045-0244 ADDED ECN 2194	20 FEB 07	AVG
A	REVISED TO REFLECT NEW SUB ASSY, 18806 WAS 16700, LABEL & HDW DWG ADDED PROGRAM 18504 WAS 17686, ECN 1944	22 APR 05	CCB
4	GROMMET 9033-0039, NOTES 4&5 ADDED ECN 1855	6 AUG 04	AVG
3	NOTE ADDED, 9045-0124 WAS 9009-0017 SPACER 10013 ADDED, ECN 1802	30 APR 04	AVG

SCALE 0.030

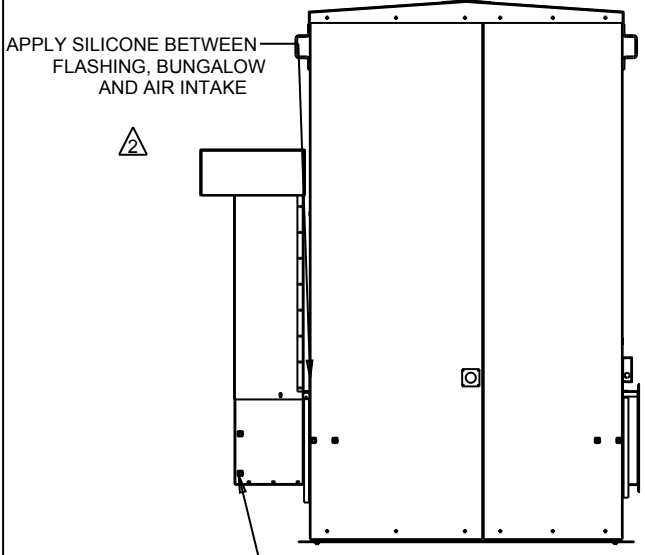


16426-01
INSTALL AIR TEMP SNSR
UNDER HOOD W/-01 ONLY

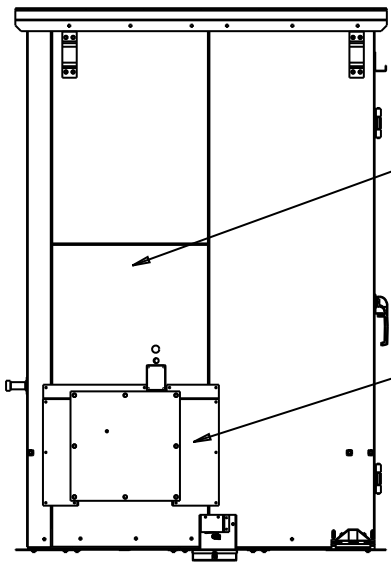
9019-0044
9019-0043



DRILL & INSTALL 9033-0037(X1)
SILICONE & PASS AMBIENT TEMP
SENSOR CABLE THRU FLASHING
W/-01 ONLY



SCALE 0.030



D	SEE SHEET 1 FOR CHANGES, ECN 2312 & 2322	17 OCT 08	CCB
C	SEE SHEET 1 FOR CHANGES, REF ECN 2212	31 MAY 2007	CCB
B	SEE SHEET #1 FOR CHANGES, ECN 2194	20 FEB 07	AVG
A	REVISED TO REFLECT NEW SUB ASSY ECN 1944	22 APR 05	CCB
4	QTY X1 WAS X2, LOCATION: THRU FLASHING WAS THRU WALL, ECN 1855	6 AUG 04	AVG
3	SEE SHEET#1 FOR CHANGES, ECN 1802	30 APR 04	AVG
LTR	DESCRIPTION	DATE	CHKD

MATERIAL
SEE INDIVIDUAL PARTS DRAWING

SCALE
AS SHOWN

UNLESS OTHERWISE SPECIFIED
DIMENSIONS ARE IN INCHES

XX ± 0.03
XXX ± 0.01

ANGLES ± 0.5 °
OTHER _____

HOVEY INDUSTRIES 2005 INC

DWN	DATE DWN	CHKD	DATE
AVG	20 AUG 03		

DWG
SIZE
A1